



United States
Department of
Agriculture

Jefferson County, Illinois

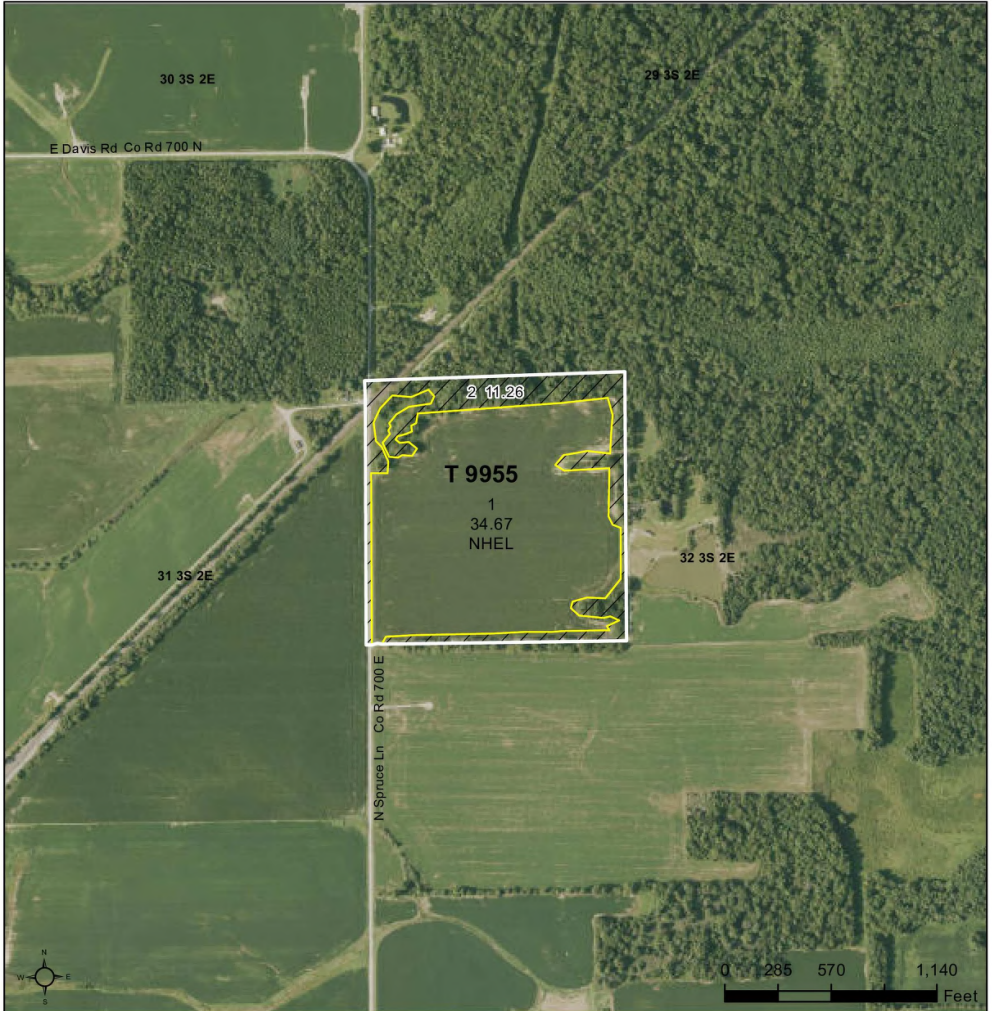


THE REND LAKE
CONSERVANCY DISTRICT

11231 MARCUS BRANCH ROAD, BENTON, IL 62812

Sheet Title: LOCATION MAP

Project Title: CASH FARM LEASE PROGRAM 2024-2029
TRACT # 9955
1 OF 1 SHEETS



Legend

- Tract Boundary
- Non-Cropland
- Cropland
- CRP

Wetland Determination Identifiers

- Restricted Use
- Limited Restrictions
- Exempt from Conservation Compliance Provisions

Corn = YC GR
Soybeans = COM GR
Wheat = SRW GR
All Crops NI - Unless Otherwise Noted

2025 Program Year
Map Created October 04, 2024

Farm 7148
Tract 9955

Tract Cropland Total: 34.67 acres

IL081_T9955

United States Department of Agriculture (USDA) Farm Service Agency (FSA) maps are for FSA Program administration only. This map does not represent a legal survey or reflect actual ownership; rather it depicts the information provided directly from the producer and/or National Agricultural Imagery Program (NAIP) imagery. The producer accepts the data 'as is' and assumes all risks associated with its use. USDA-FSA assumes no responsibility for actual or consequential damage incurred as a result of any user's reliance on this data outside FSA Programs. Wetland identifiers do not represent the size, shape, or specific determination of the area. Refer to your original determination (CPA-026 and attached maps) for exact boundaries and determinations or contact USDA Natural Resources Conservation Service (NRCS).